



You are invited to the
104th annual exhibition of the

TWENTY MELBOURNE PAINTERS SOCIETY INC

Exhibition dates August 11th to 28th

Opening hours: Monday to Friday 10am to 5pm

Saturday and Sunday 1 to 5pm

*Please check the TMPS website and social media for any
last-minute alterations*

*Glen Eira City Council Gallery
Cnr. Hawthorn and Glen Eira Roads,
Caulfield*

Since its establishment in 1918, the members of the Twenty Melbourne Painters Society have presented an annual exhibition, in spite of a Great Depression, a world war and a more recent pandemic. This year we seek to uphold that proud tradition, and continue to present to the art-loving public an exemplary standard of traditional painting.

This year, due to restrictions, there will be no opening night, but a walking tour of the exhibition will be conducted by members at 2pm every day. See the website for details.

For more information
please call 0487 324 490, or 0487 328 862
during opening hours

Angela Abbott Greg Allen

Fiona Bilbrough John Orlando Birt

Bill Caldwell Margaret Cowling

Ray Hewitt Paul McDonald Smith

Jennifer Fyfe Amanda Hyatt

Lee Machelak Barbara McCallum

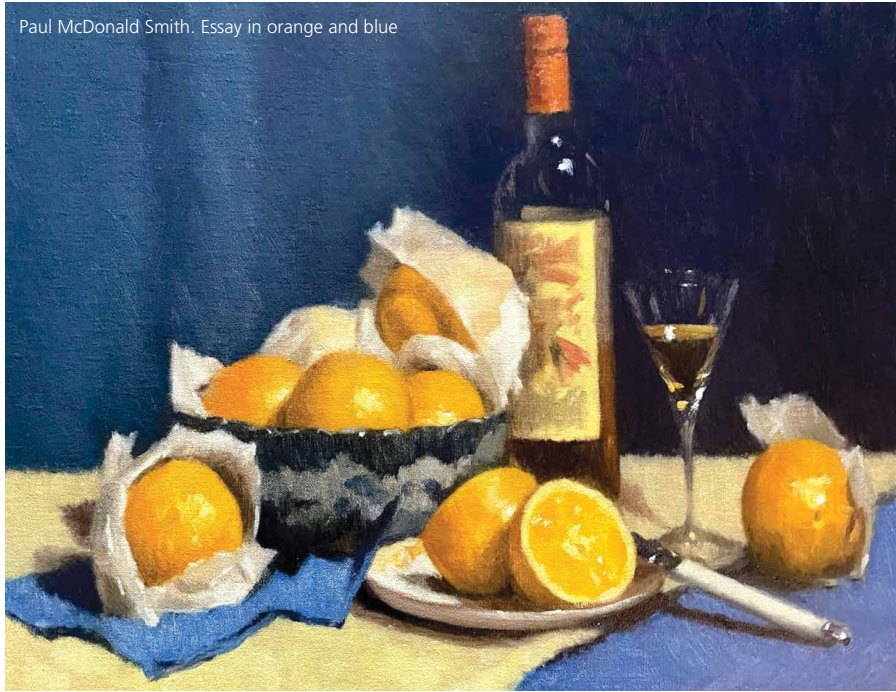
Ross Paterson Herman Pekel

Clive Sinclair Peter Smales

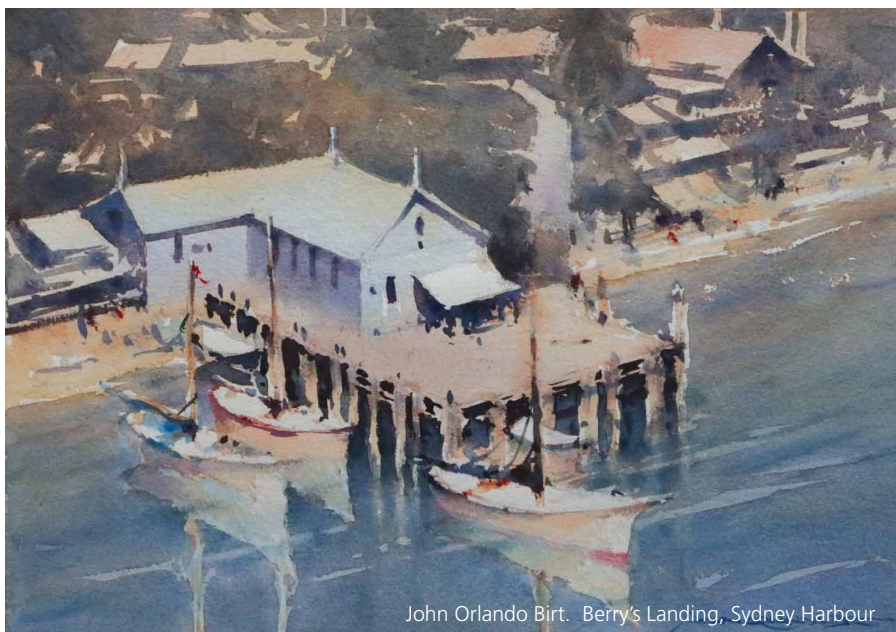
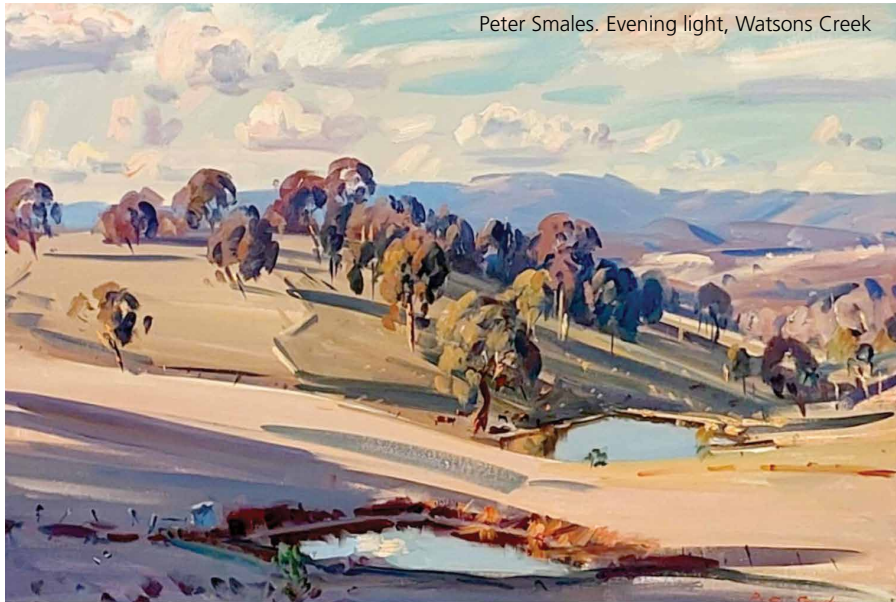
David Taylor Maxwell Wilks

Joseph Zbukvic

Paul McDonald Smith. Essay in orange and blue



Peter Smales. Evening light, Watsons Creek



John Orlando Birt. Berry's Landing, Sydney Harbour

www.twentymelbournepainterssociety.com.au